



24 INFRA PROJECTS

- ☎ +91 7046125362
- ✉ info@24infraprojects.in
- 🌐 www.24infraprojects.com
- 📍 M-28 & M-38 Siddhi Vinayak Platinum, Pandesara, Surat, Gujarat 394210

GSTIN:-24AADFZ6580D1Z3
PAN :- AADFZ6580D
URC:- UDYAM-GJ-22-0348765

Our Company Leadership

NITESH MAURYA Business Development Manager

- Strategic Planning:** Proven ability to develop and execute strategic business plans to achieve organizational objectives.
- Relationship Management:** Skilled in building and maintaining strong relationships with clients, partners, and key stakeholders.
- Sales and Negotiation:** Demonstrated success in closing high-value deals and negotiating favorable terms.
- Market Analysis:** Proficient in conducting market research, identifying trends, and capitalizing on business opportunities.
- Team Leadership:** Experience in leading and motivating cross-functional teams to achieve ambitious targets.
- Communication:** Strong verbal and written communication skills, including effective presentations and proposal writing.

ABHISHEK RAJPUT operation management & service management

Results-oriented and versatile professional with a comprehensive background in both Operation Management and Service Management. Proven track record in optimizing operational efficiency, implementing strategic service initiatives, and driving overall business success. Adept at leading cross- functional teams, streamlining processes, and ensuring exceptional service delivery. Seeking an opportunity to contribute my expertise to a dynamic organization poised for growth.

- | | |
|---|--|
| <ul style="list-style-type: none"> •Operation Management: •Strategic Planning •Process Optimization •Supply Chain Management •Quality Assurance | <ul style="list-style-type: none"> •Service Management: •Service Strategy Development •Customer Relationship Management •Service Level Agreement (SLA) Management •Incident and Problem Management |
|---|--|
-
- Effective Verbal and Written Communication
 - Client and Stakeholder Relationship Building

Dear Sir,

With reference to discussion with Nitesh Maurya and Abhishek Rajput, we are pleased to share the “24 INFRA PROJECTS”.

24 INFRA PROJECT is a leading multi-disciplinary Retail Project Management, Residential project & architectural Design consultancy Company and is distinguished from others for its relentless quest for quality-a unique tradition of placing client’s needs to above all.

At 24 Infra project, we are more than architects; we are creators of immersive and functional spaces that transcend the ordinary. Established with a commitment to delivering exceptional design solutions, we bring a wealth of experience, innovation, and passion to every project we undertake.

Our Vision:

To be the forefront of architectural excellence, shaping environments that seamlessly blend aesthetics, functionality, and sustainability.

Our Mission:

Empowering our clients with visionary designs, fostering creativity, and enriching communities through sustainable and thoughtful architecture.

What Sets Us Apart:

Innovative Design Thinking: Our team of talented architects thrives on pushing the boundaries of conventional design. We consistently embrace innovative solutions that cater to the unique needs and aspirations of our clients.

Client-Centric Approach: At 24 Infra Project, we believe in collaboration. We work closely with our clients to understand their vision, values, and goals, ensuring that every project is a true reflection of their identity and purpose.

Sustainability Matters: Environmental responsibility is at the core of our practice. We integrate sustainable practices into our designs, aiming to create spaces that not only stand the test of time but also contribute to a greener and healthier planet.

Holistic Project Management: From conceptualization to completion, we manage every aspect of the architectural process with meticulous attention. Our holistic approach ensures seamless coordination, timely delivery, and cost-effective solutions.

Our Services:

Architectural Design: Our architectural designs are a blend of creativity and functionality, delivering spaces that captivate and inspire.

Interior Design: We create interiors that harmonize with the architectural vision, enhancing the overall aesthetic appeal and functionality of the space.

Project Management: Our experienced project managers ensure that each project is executed with precision, meeting deadlines and exceeding expectations.

Sustainability Consulting: Committed to sustainable architecture, we offer consulting services to integrate eco- friendly practices into your projects.

Our Portfolio:

Visit our portfolio to explore a diverse range of projects, including residential, commercial, and institutional spaces, each showcasing our commitment to excellence. Discover the 24 Infra Project difference – where design meets purpose, and spaces come to life.

Contact us today to embark on a journey of architectural brilliance.



ADITYA BIRLA FASHION AND RETAIL LIMITED

We are the Dedicated Project Development Agency for "VAN HUESEN INNERWEAR." We have completed 4 stores with sub vendor.

Van Huesen Innerwear Is highest sq.ft (area of 1350 Sq.ft) retail project which we have completed

We have completed all projects at a same time within 18-21 days timeline

We have completed which name of state Gujarat/ Maharastra / GOA etc.



DAVAINDIA HEALTH MART LTD.

We are the Dedicated Project Development Agency for "Davaindia Health Mart LTD.." We have completed 13stores .

Davaindia Health Mart LTD. sq.ft (area of 350-600Sq.ft) retail project which we have completed

We have completed all projects at a same time within 18-22days timeline We have completed which name of state Punjab, Haryana/ Delhi etc.

NARAYANA E-TECHNO SCHOOL

Architectural Style:

Schools can have various architectural styles, ranging from modern designs with clean lines and large windows to more traditional structures with brick facades or a combination of materials.

Entrance:

The main entrance is usually prominently marked and may have a welcoming design, with a canopy or overhang to protect students from the weather.

Landscaping:

Surrounding the school, there may be well-maintained landscaping, including lawns, trees, and flower beds. Some schools incorporate outdoor spaces for students to gather or engage in activities.

Parking and Drop-off Areas:

The exterior includes parking lots for both staff and visitors. There may also be designated drop-off zones for school buses and parents.

NARAYANA E-TECHNO SCHOOL

Classrooms:

Classrooms are designed to accommodate a specific number of students and typically include desks or tables and chairs. There may be a teacher's desk at the front of the room and a whiteboard or chalkboard for instructional purposes.

Library:

The school library is a dedicated space for reading and research. It includes bookshelves, reading areas, study tables, and sometimes computer stations for accessing digital resources.

Administrative Offices:

Administrative offices house the principal's office, staff rooms, and other administrative spaces where teachers and staff can collaborate and plan.





ARELI COMMERCE PRIVATE LIMITED

We are the Dedicated Project Development Agency for "FRENDY MART." We have completed 2 stores with sub vendor.

Frendy Mart is highest sq.ft (area of 650-1450 Sq.ft) retail project which we have completed

We have completed all projects at a same time within 18-21 days timeline

We have completed which name of state Gujarat..



HOTEL FORTUNE

We are the Dedicated Project Development Agency for "OYO." We have completed 44 Rooms Hotels with sub vendor.

Highest sq.ft (area of 15000 Sq.ft) retail project which we have completed

We have completed all projects at a same time within 90-120 days timeline

FORMAT	NO. OF PROJETS	NO. OF SQ. FT
RETAILS STORE	152	97,934
RESIDENTIAL	129	1,36,113
HOTEL	3	20,175
SCHOOL	5	91,578

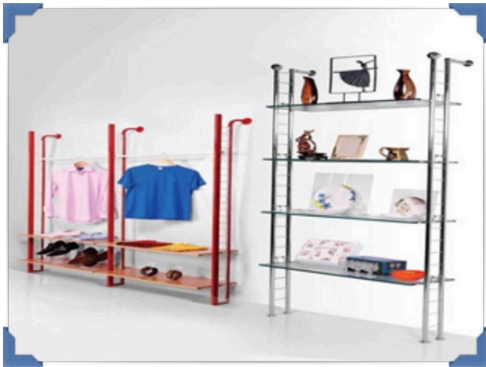
TYPE OF PRODUCTS WITH OUR MANUFACTURING UNIT FOOTWEAR & SPORT DISPLAY



TYPE OF PRODUCTS WITH OUR MANUFACTURING UNIT SUPERMART RETAIL STORE



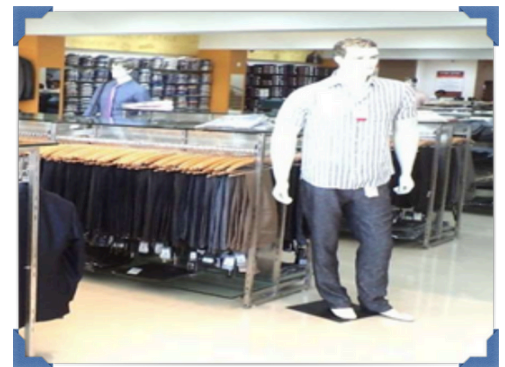
TYPE OF PRODUCTS WITH OUR MANUFACTURING UNIT GARMENT'S RETAIL STORE CHAIN



GRID DISPLAY LADDER PILLER

LADDER PILLER GRID DISPLAY

GHODA PILLER

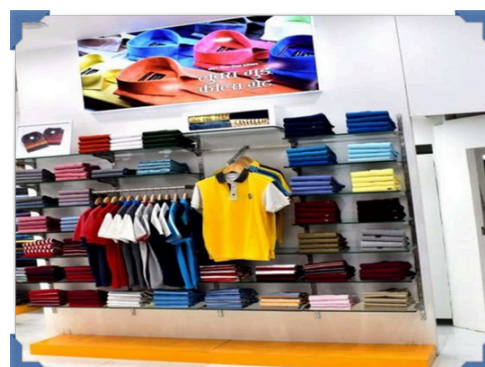
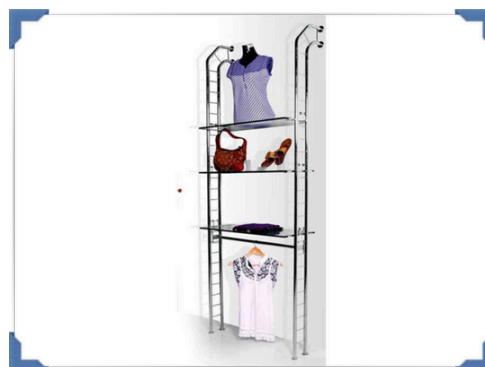


SHUTING DISPLAY

GRID DISPLAY

H.I.T. COUNTER

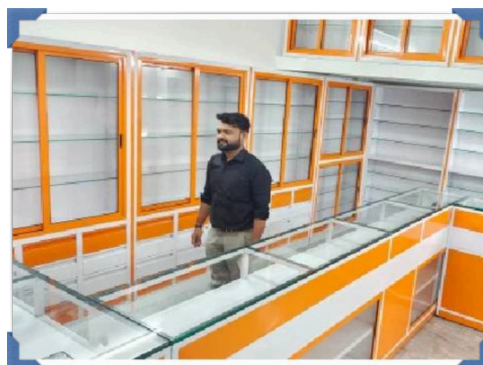
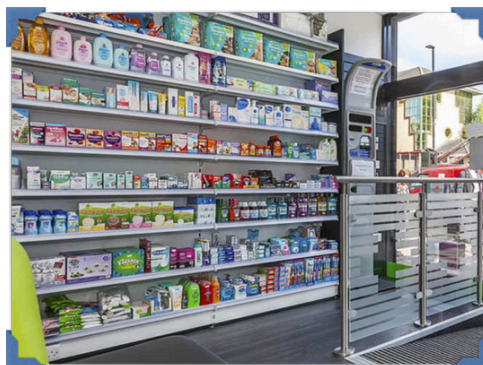
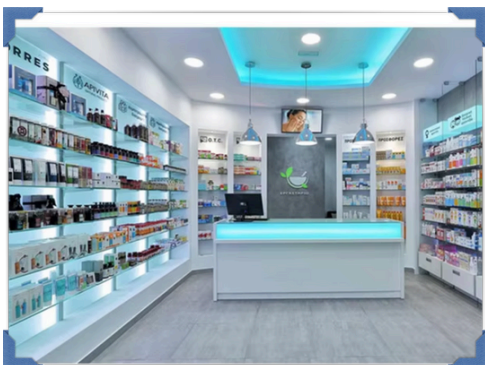
TYPE OF PRODUCTS WITH OUR MANUFACTURING UNIT MAN'S & KID'S GARMENT RETAIL STORE CHAIN



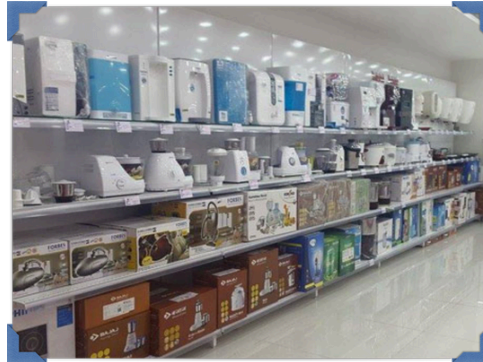
TYPE OF PRODUCTS WITH OUR MANUFACTURING UNIT MOBILE DISPLY RACK



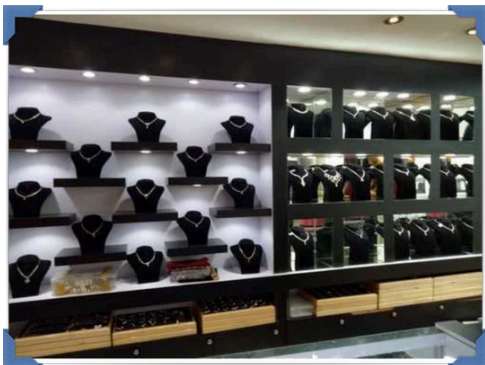
TYPE OF PRODUCTS WITH OUR MANUFACTURING UNIT MEDICAL DISPLY RACK



TYPE OF PRODUCTS WITH OUR MANUFACTURING UNIT ELECTRONIC DISPLAY



TYPE OF PRODUCTS WITH OUR MANUFACTURING UNIT STUDIO & JEWELLERY DISPLAY



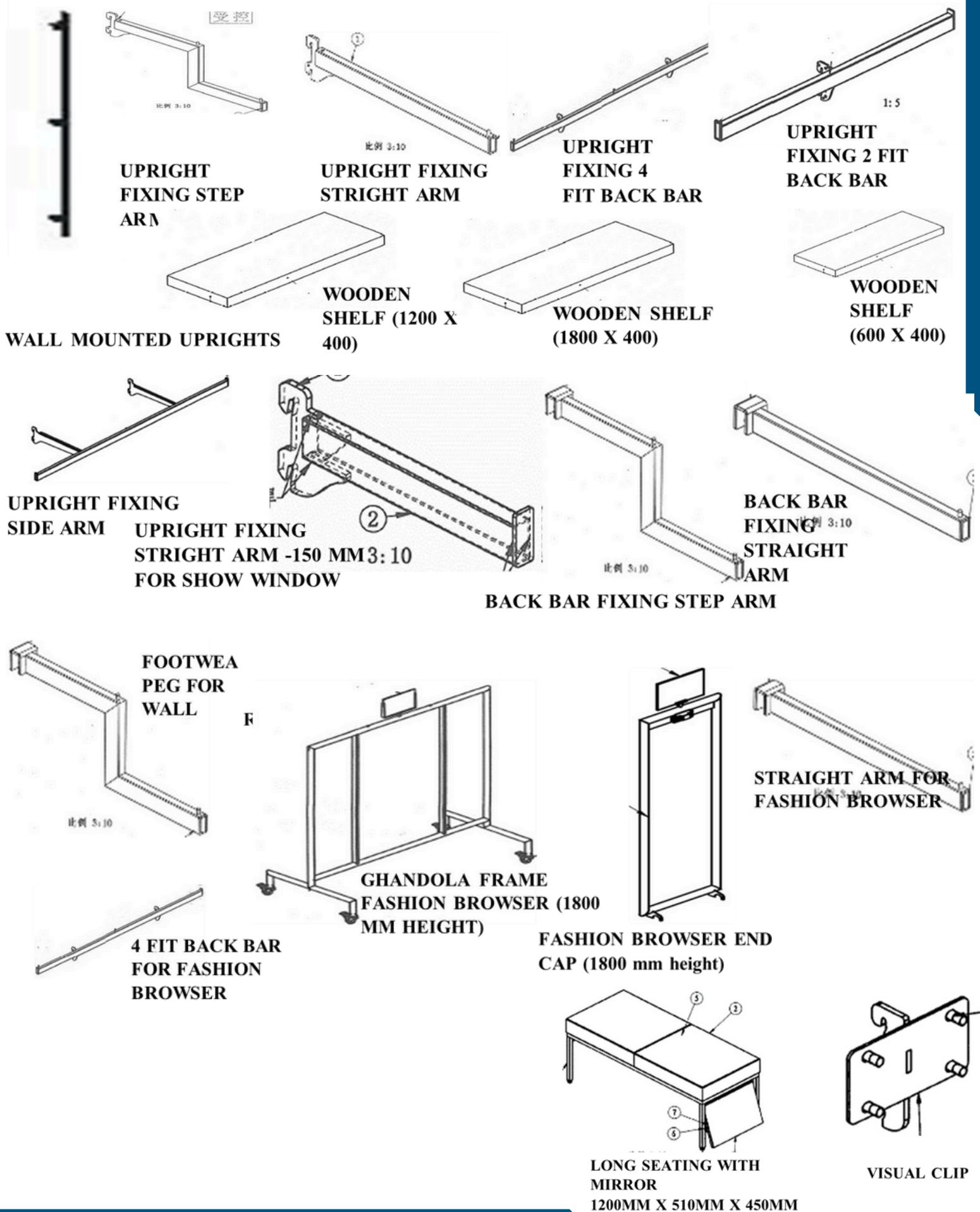
TYPE OF PRODUCTS WITH OUR MANUFACTURING UNIT GANDOLA DISPLAY



TYPE OF PRODUCTS WITH OUR MANUFACTURING UNIT COUNTER DISPLAY



TYPE OF PRODUCTS WITH OUR MANUFACTURING UNIT GARMENTS SHOWROOM FIXTURES





Painting Work



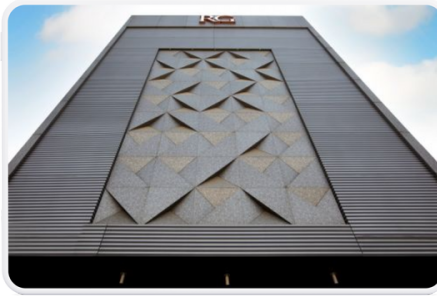
Gypsum Ceiling



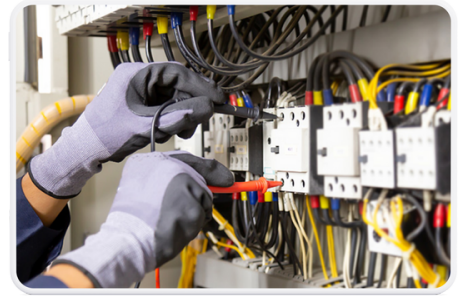
Gypsum Partition



Glass Partition



ACP Elevation



Electrical Work



Air Conditioner



Fire System



CCTV Camera



Branding & Vinyl Work



PVC Vinyl flooring Carpet



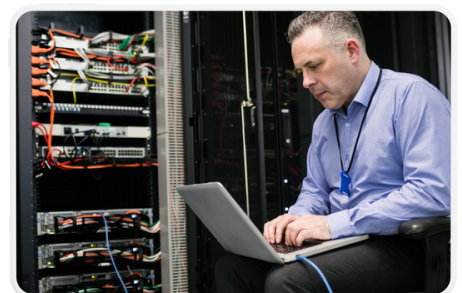
Ceramic Tiles



On site carpentry



MS & Wooden Furniture



All IT Work & Server Solution

>Operation Management

- | | | |
|------------------------|-----------------------------|---|
| • Strategic Planning | Service StrategyDevelopment | Effective Verbaland Written Communication |
| • Process Optimization | Supply Chain Management | Supply Chain Management |
| • Quality Assurance | | |

>Associated Project Team: 55+ Site Supervisor and we the management team will personally look after the site

Laboure & Contractor
the sites 670+ Laboure's & 50+ Contractors with Experience.

Agencies - Pan India

>Contact As

Nitesh Maurya
Mo No:- +91-962 476 9641
Email id :- nitesh@24infraprojects.com

Abhishek Rajput
Mo No:- +91-704 612 5362
Email id :- abhishek@24infraprojects.com

Our Supportive Company

Camtech Enterprise
GST IN:- 24CZIPM9154Q1Z
Automation and CCTV sales & services

Build My Tech
GST IN :- 24DRRPP1544P1Z1
IT Work & Server Solution

Website No:- www.24infraprojects.com
Customer Care Number:- +9173000 99669
Email Id:- info@24infraprojects.in

GSTIN:-24AADFZ6580D1Z3
PAN :- AADFZ6580D
URC:-UDYAM-GJ-22-0348765

> OUR CLIENT DETAIL'S



➤ OUR SUPPLIER DETAIL'S



Thank
you!